

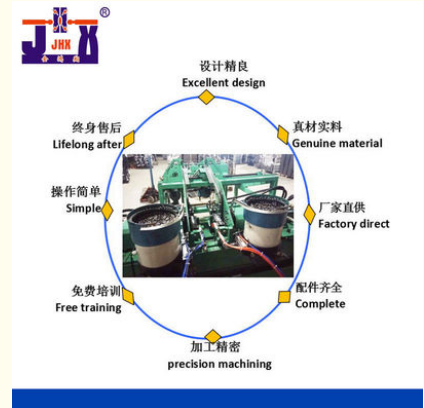


## JDS 6.6KW Nut Assembly Machine Screw Plug Steel Pipe Stopper

### Our Product Introduction

#### Basic Information

- Place of Origin: Guangdong, China
- Brand Name: Jin Hongxiang
- Certification: CE
- Model Number: JDS
- Minimum Order Quantity: 1 set
- Price: \$12,888.00/sets 1-1 sets
- Packaging Details: Export wooden case
- Supply Ability: 100 Set/Sets per Month



#### Product Specification

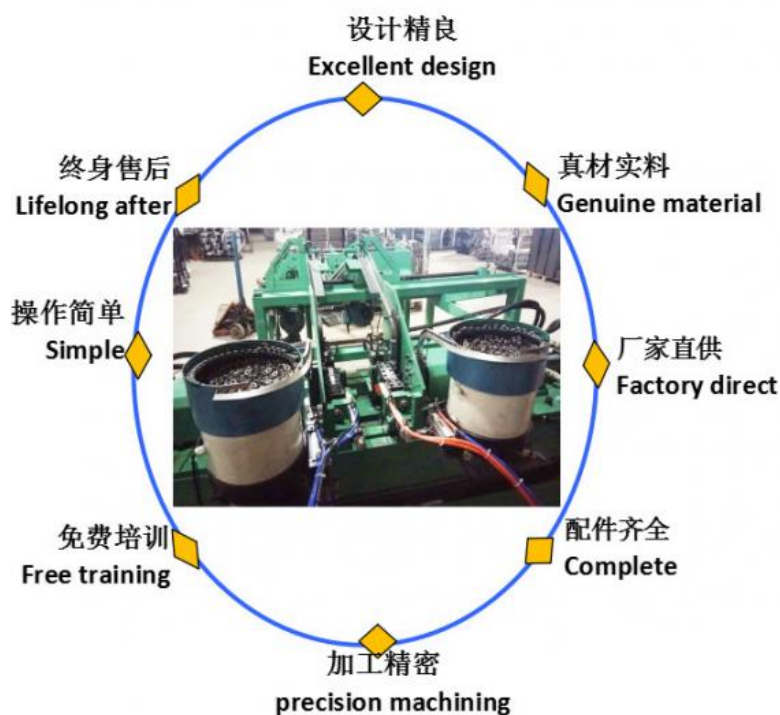
- Condition: New
- Machine Type: Double Head Nut Stopper Machine
- Weight (KG): 1350
- Video Outgoing-inspection: Provided
- Marketing Type: Ordinary Product
- Warranty Of Core Components: 1 Year
- Core Components: Motor, PLC, Display Screen,
- Warranty: 1 Year, 1 Years
- Key Selling Points: Double Headed Plug Nut, Fully Automatic, Durable And Fast.
- Applicable Industries: Iron Pipe Furniture, Hardware Household Products
- Product Name: Iron Pipe Double Headed Plug Nut Machine
- MOQ: 1 Set
- Packing: Export Wooden Case

## Product Description

### Iron Pipe Screw Plug Machine

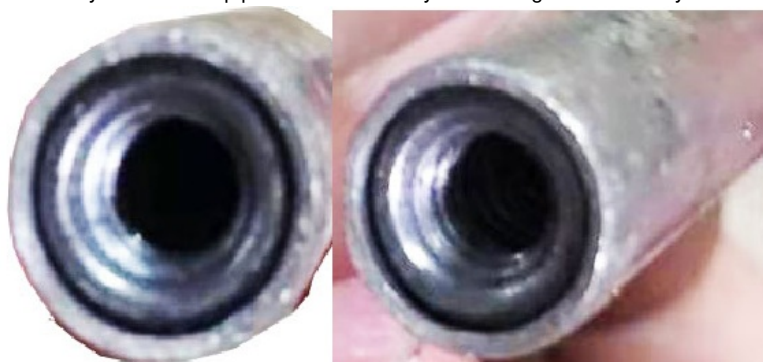
#### Name:

JDS nut stopper machine,  
double head nut stopper machine,  
automatic stopper machine,  
cap stopper machine,  
nut stopper machine,  
pipe stopper machine  
Iron Pipe Screw Plug Machine



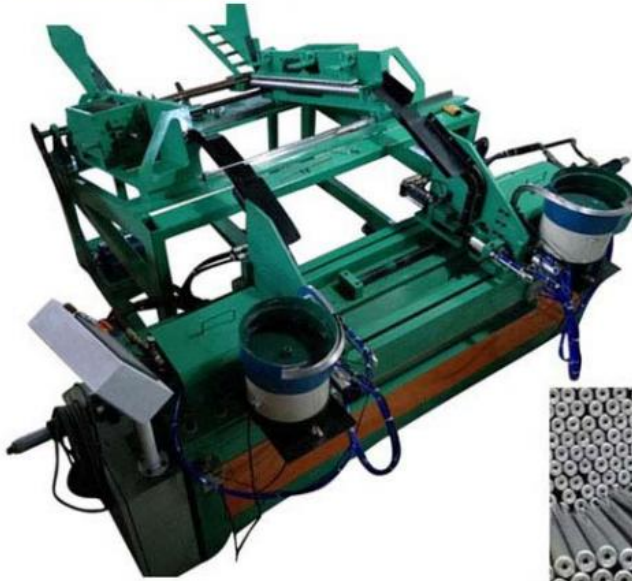
### Overview and application

The machine can quickly and automatically drive the nut into both ends of the iron pipe, and shrink the mouth, so that the nut is fixed at the port, which is convenient for screwing or assembling the product. It is mainly used in iron pipe furniture industry and storage rack industry.



### Performance characteristics

1. The double head vibrating disc can automatically feed and plug.
2. Automatic pipe feeding, automatic burr brushing, automatic plug feeding, automatic plug punching, automatic necking and automatic discharge.
3. It can be used for iron pipe with diameter of 12-25mm. Different pipe plugs are fed with different vibrating discs.
4. Circuit PLC programming, man-machine interface display, convenient and simple setting.
5. All feeding moving parts are slide rails and sliders, which move stably and light.
6. The frame square steel is reinforced and welded, stable, solid and durable.,
7. The plugging speed is fast, more than 30% higher than that of similar equipment.



#### Technical parameter

Model	Hydraulic motor	Iron pipe size	Length	Dimension (M)	Weight
JDS	6.6KW	φ9-25MM	320-1000MM	2.95*2.15*1.55	1350KG

#### arm tip:

our products are constantly upgrading and adjusting. If the pictures displayed are different from the real object, the real object shall prevail, and will be confirmed when placing the order.



**Dongguan Jinghongxiang Automation Equipment Co., Ltd.**



13925780098



jhx16888@gmail.com



wire-bendingmachine.com

No. 78, Shangzhong Road, Shangdi Industrial Zone, Liaobu Town, Dongguan, Guangdong, China